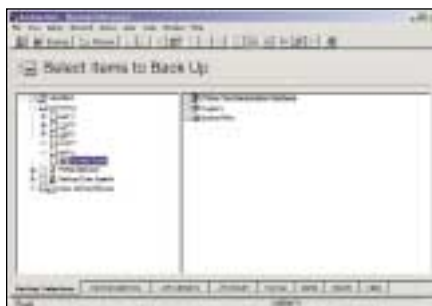


# VERITAS Backup Exec™

## for Windows NT and Windows 2000

### KEY BENEFITS

- First Microsoft *Certified* Windows NT and Windows 2000 data protection application
- Provides a feature rich set of backup and recovery tools for power administrators while maintaining the easy to use interface and wizards for novice users
- Comprehensive offering of agents and options for the online protection of database and internet applications, centralized management of multiple backup servers, disaster recovery, and storage area networks (SANs)



The Backup Exec Microsoft Explorer-like interface is familiar and easy to use.

*“We selected a trusted supplier, VERITAS Software, for our worldwide standard for backup management and data protection, based on their continued commitment and delivery to Windows NT and Windows 2000. With end-to-end data protection, centralized administration and automated backup and recovery, VERITAS Backup Exec is expected to reduce the total cost of protecting our corporation’s valuable data.”*

– Arne Josefsberg,  
General Manager, ITG  
Microsoft

### Worldwide Leader for Windows NT and Windows 2000 Data Protection

VERITAS Backup Exec™ is the first storage solution certified for both Windows NT and Windows 2000 operating systems. Now in its seventh generation, Backup Exec is a high performance, easy to use, flexible network backup solution that is currently protecting millions of Windows NT and Windows 2000 servers worldwide.

Built-in wizards simplify common operations, making Backup Exec a tool that is easy to use for the less technical user, yet powerful enough for the more advanced user. A unique Backup Exec Assistant streamlines startup, system configuration, job scheduling, and other routine tasks. Combined with the large array of available options and agents, Backup Exec is an industry leading backup solution that scales to support growing networks and constantly changing configurations. As Backup Exec protects mission critical data, it measurably increases the value of corporate technology investments and reduces the total cost of system ownership.

### Product Highlights

- **Microsoft Certified Support for Windows 2000** – Full protection of the operating system, including Active Directory, Distributed File System, NTFS’ new structure and System State components.
- **NEW! Backup to Disk** – Faster backups and restores using disk media, including hard drives, NAS appliances and RAID systems as storage media.
- **NEW! Backup via a Specified Backup Network** – Reduce LAN traffic by isolating backup traffic to a subnetwork.
- **NEW! Add-on Support for Groupware Applications** – Integrate Microsoft Exchange Server, Microsoft SharePoint Portal Server, and Lotus Domino “hot backups” into daily backup routines.
- **Add-on Support for Database Applications** – Integrate online data protection and ease the recovery of corporate databases such as Microsoft SQL Server, Oracle and R/3 databases.
- **NEW! Web-based Monitoring Tool** – Monitor the activities of hundreds of Backup Exec servers running Windows NT, Windows 2000 or NetWare operating systems from a single Web browser.
- **Integrated Virus Protection** – Pre-scans for viruses and cleans files, including zip files, before backup.
- **Intuitive User Interface and Wizards** – Easy to use for the less technical, yet powerful enough for the most sophisticated network user.
- **Standard Autoloader Support Included** – Maximizes backup performance and minimizes administration of single drive/unlimited slot autoloaders. Support for multi-drive libraries can be added via the Backup Exec Library Expansion Option.
- **Performance Optimization** – Increases performance and reduces network traffic/backup time using VERITAS’ exclusive Remote Agent Accelerator™\* technology, providing distributed processing and source compression.
- **Support for NAS and SANs** – Expand data protection with native support for most NAS devices as a client and optional device sharing over a fibre-channel network for LAN-free backup within a SAN.



### Industry Firsts

- The industry's first data protection application designed for Windows NT
- First shipping Windows 2000 data protection application and first to complete Microsoft certification for Windows 2000
- First intelligent disaster recovery solution for both Windows NT and Windows 2000
- First to provide support for online Exchange 2000 Server and SQL Server 2000 data protection agents
- First to provide a storage area network (SAN) solution designed for Windows NT and Windows 2000
- First heterogeneous fibre-channel SAN solution for mixed Windows NT and Windows 2000 and NetWare environments

### Easy to Use

Backup Exec simplifies operations to an unprecedented degree, while providing the rich set of features and the control required for more complex networks and experienced administrators.

The familiar Explorer-like interface allows users to take full advantage of tabbed dialogs, property sheets, tool tips and right-click context sensitive menus. Wizards guide the user through many common tasks offering flexibility in configuration, media rotation, device sharing and disaster recovery. Features such as the Windows Explorer Integration and One Button Backup offer “express” backup methods for the entire server or a selected resource (server, directory, drive, folder, file).



Backup Exec Assistant streamlines backup and restore operations.

### Ensured Reliability

Backup Exec is the ideal data protection solution for any type of Windows NT or Windows 2000 network. It's proven and innovative design fully incorporates Microsoft's design standards, including COM+ architecture, MAPI, VDI, Active Directory and WMI, to ensure 100% Windows NT and Windows 2000 reliability, today and into the future.

Additional reliability features include an integrated virus scan and clean engine to pre-scan files, including Zip files, helps safeguard your system from viral corruption. The automatic Job Retry feature, CRC Data Verify and Database Consistency Checking features ensure job/data reliability and high-speed verification.

### Engineered for Maximum Performance

The Backup Exec architecture minimizes network traffic and maximizes performance, significantly reducing backup times to fit into the ever-shrinking backup window. The optional Remote Agents for Windows NT and Windows 2000\* and NetWare\* use VERITAS-exclusive Agent Accelerator™ technology for distributed processing and source compression when protecting remote file and database servers. The included VERITAS-developed Tape Class device drivers are optimized for speed and complex management of robotic devices.

New performance features in this Backup Exec release are the abilities to:

- Utilize disk media as a target for backup jobs – enabling data staging of files or databases for very fast restores as well as leveraging the declining price of disk storage;
- Specify a secondary network to pass backup traffic through reducing LAN traffic on the primary network;
- Intelligent Image Option\* decreases backup times while lowering the amount of system resources needed to create a very efficient and fast backup.

### Cluster-Aware Operation

Improve system fault tolerance by protecting highly available Microsoft Cluster Server (MSCS) machines with Backup Exec Advanced Server — which leverages Microsoft's Clustering APIs to provide automatic backup server failover in active/passive cluster deployments. Failure of the primary server invokes Backup Exec to automatically begin operation on a secondary node, redirecting the current job and remaining scheduled jobs to the secondary node in the cluster. Expand to four-node cascading failover support for Windows 2000 Datacenter Server cluster deployments. Protection of clustered active-active applications is also supported.

### Additional Disaster Recovery Protection

Proactive preparedness is the key to ensure that business-critical data is available quickly in the event of a disaster. The Intelligent Disaster Recovery Option\* integrates directly with daily backups to provide wizard-based “point-in-time” disaster recovery of local and remote Windows NT/Windows 2000 systems or remote NetWare servers. A “bare metal” restoration process initiated via diskettes, CD-R/RW, or bootable tape allows for system recovery without having to reinstall the OS. System files and database applications are restored from the most recent full, incremental, differential or working set backup.



Backup Exec Intelligent Disaster Recovery Option provides wizards for simplified disaster recovery preparation and recovery.\*

\* Option/Agent sold separately

\*\* For more information consult the Backup Exec Tech Support page at [http://support.veritas.com/menu\\_ddProduct\\_BEWNT.htm](http://support.veritas.com/menu_ddProduct_BEWNT.htm).

### Integrated Application Support

Easily integrate "hot backups" of today's business critical, 24x7 groupware, database and file/data applications server operations into scheduled network backups with the optional Backup Exec groupware and database agents.

#### Groupware Agents:

Agent for Microsoft Exchange Server – mailbox and individual message restore for Exchange 5.5 and Exchange 2000 Server

Agent for Microsoft SharePoint Portal Server – online data protection of stored collaboration materials, documents and databases

Agent for Lotus Domino – Point-in-time restores of Lotus databases via the transaction logs using the native Lotus Domino APIs

#### Database Agents:

Agent for Microsoft SQL Server – "Roll-back" restore for SQL Server 6.5, 7.0 and SQL Server 2000

Agent for Oracle – online backup for Oracle 8i, 8.x and 7.3

Agent for R/3 for Oracle – reliable protection for SAP databases

### Networkwide Centralized Administration

For more complex backup operations, Backup Exec's client/server architecture provides two methods for remote monitoring and administration of individual backup servers from any Windows NT or Windows 2000 machine.

- The new Web-based ExecView feature centrally monitors the activities of all Backup Exec servers running on Windows NT, Windows 2000 and NetWare, over the LAN or WAN from any Web browser.
- The Network Storage Executive\* option creates a consolidated "storage domain" and offers advanced centralized management of multiple Backup Exec media servers. Features such as a centralized database and catalog, policy-based management, backup server pooling, and intelligent job load balancing provide greater backup performance, fault tolerance and data availability.

### Advanced Device and Media Management (ADAMM)

Built-in media management and administration for Backup Exec extends beyond just writing data to the media — ADAMM prevents accidental overwrite of data and automates the storage device operations. Adding the Library Expansion Option\* expands ADAMM's capabilities to multidrive tape library systems, which enables additional drives to be accessed for expanding storage capacity.

By streamlining high-capacity backups with rule-based policies, jobs run concurrently and are automatically directed to the first available drive, resulting in optimized performance. The built-in wizards guide users through routine tasks such as device pooling, creating media sets and establishing Grandfather-father-son media rotation schemes. Other features include automatic media labeling, cleaning protection, user-defined retention periods, media statistics, bar code reading and catalogs displaying either volume or media-centric views. Integrated slot partitioning enables users to partition slots within an autoloader or library and target jobs to a specific slot.

### Support for Emerging Storage Technologies

VERITAS addresses the increasing demand for high performance and scalability of storage applications by developing support for the latest storage technology. As new "storage appliances" are being released to capture the explosion of information on today's growing networks, Backup Exec has expanded its ability to recognize and protect file and database application data\* on native and emulated Windows NT and Windows 2000 NAS storage devices.\*\* The SAN Shared Storage Option\* enables LAN-free backup between Windows NT, Windows 2000 and NetWare servers over a fibre-channel network, enabling improved tape device sharing, reduced network traffic and increased backup speeds.

### VERITAS Backup Exec Options and Agents

Backup Exec is the globally preferred solution for high performance, reliable Windows NT and Windows 2000 data protection, and the most comprehensive solution for growing and upgrading networks. Backup Exec can be expanded with database protection and storage management solution tools for the diverse application needs of growing network environments in all industries.

#### Online Groupware Agents

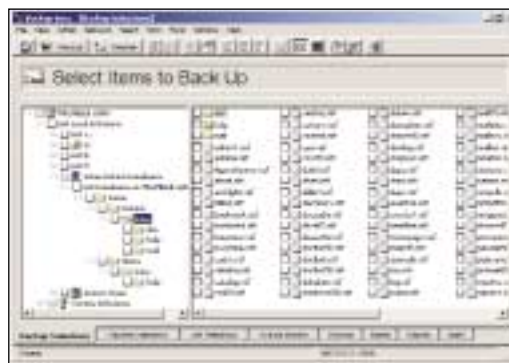
**Agent for Microsoft Exchange Server** — is the fastest and most flexible way available to protect vital Exchange 5.5 and Exchange 2000 Server data while the application is online. Providing full backup and restore of all Exchange Server components, including embedded objects, attributes and all Outlook components, the Agent for Microsoft Exchange Server also gives administrators the flexibility to perform individual mailbox backup with selective restores of individual messages.

**Agent for Microsoft SharePoint Portal Server** — safeguards the SharePoint Portal Server corporate knowledgebase system with online, fast and reliable data protection and recovery. Protected portal components include the Web Storage System files/databases, the Search Service, SharePoint Portal Server configuration files and the Applications folders. Restore options include a full database and dependent data restores or redirection to an alternate SharePoint Portal Server.

**Agent for Lotus Domino** — integrates comprehensive data protection of vital Lotus Domino messaging and collaboration databases within daily backup activities. Using the native Domino backup API, this option integrates nondisruptive data protection of the databases and transaction logs (R5). Flexible restore options include database redirection and point-in-time "roll-back" recovery of databases or transaction logs (R5 only). R5 users also benefit from user-controlled recycling of the transaction logs reducing manual intervention and speeding recovery.

#### Online Database Agents

**Agent for Microsoft SQL Server** — ensures that your business-critical OLTP, OLAP and e-business data are protected in case of application/hardware-based corruption or loss. It provides SQL Server 6.5, 7 and SQL Server 2000 users granular protection down to the individual table space or filegroup. Execute differential backups as well as Transaction Log backups with automatic truncation. Restore options include redirection to another SQL Server and the ability to perform "rollback restores," enabling a database to be recovered to a specific moment in time, rather than a backup job. Backup Exec™ Multipipe and Virtual Device Interface (VDI) support give users the most dependable and fastest way available for complete SQL Server protection.



Seamlessly integrate online database and messaging applications into daily backup routines.

# VERITAS Backup Exec™

## for Windows NT and Windows 2000

**Agent for Oracle** — offers database-aware, online backup for business-critical Oracle8i, 8.0.x and 7.3.4. Integrating Oracle backup with the advanced features of Backup Exec provides data protection of both individual table spaces and complete Oracle databases, including archived redo files and control files, without taking them offline. Combined with Backup Exec Library Expansion Option, it provides a true “lights-out” backup solution.

**Agent for R/3 for Oracle** — provides superior data protection by delivering backup of critical data while the application is still online and in use. The R/3 Agent, certified by SAP, is a reliable solution that allows Backup Exec to provide both local and remote protection of the latest versions of R/3 databases using the SAP (BC-BRI BACKINT) interface while enabling you to manage your data efficiently.

### Disaster Recovery

**Intelligent Disaster Recovery™ Option** — provides the only “point-in-time” recovery solution, for both local and remote Windows NT/Windows 2000 systems, eliminating the need to first reload the entire operating system. Using either the diskette-based or CD-R/CD-RW or bootable tape, Intelligent Disaster Recovery will get you back online fast, allowing you to restore from your last complete backup set including full, incremental, differential and working set backups. Intelligent Disaster Recovery is the only disaster recovery solution allowing users to specify new hard-disk information, RAID configurations and network configuration cards.

### High-Performance System Options

**Intelligent Image Option** — increases backup performance and reduces CPU processes by mapping the meta-data of a local file system and copying the volume as a single file to the storage device. It seamlessly integrates into Backup Exec operations and allows full volume or individual file restores from full, incremental and differential backups. This is an ideal solution for servers with thousands of smaller files and requires fast backups with minimal impact to system resources—such as a Web server.

**Network Storage Executive™** — is a powerful management tool designed to centralize the administration of Backup Exec for Windows NT and Windows 2000. Network Storage Executive manages multiple Backup Exec servers from one easy to use Microsoft Management Console (MMC). It increases fault tolerance by using backup policies, backup server load balancing and the strengths of Microsoft SQL Server database.

**SAN Shared Storage Option** — is a ground-breaking solution in manageability and performance for large-scale, high-end storage environments. This powerful LAN-free backup solution allows multiple distributed backup servers to share common, centralized storage devices that are connected over a switched-fabric or fibre-channel arbitrated loop storage area network (SAN) for greater performance, efficiency and fault tolerance. The SAN Shared Storage Option load balances activity across multiple Backup Exec servers, increases performance and backup speeds, centralizes management tasks and lowers the total cost of ownership.

**Backup Exec Library Expansion Option** — enables additional drives to be added to multidrive tape or optical autoloader/ library storage systems. When using the Advanced Device and Media Management (ADAMM) features, this option provides extensive configuration and management capabilities to include “lights-out” backup and restore operations, bar-code reader and portal support. With the embedded device partition utility, users can partition autoloader slots to target backup jobs to a specific slot.

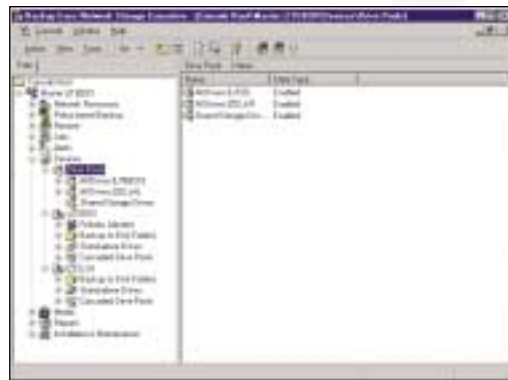
**Open File Option** — ensures that every file on your network is protected even if it is currently in use. Perfect for application and data files that must remain open and available on the network during backups. This option handles open files at the volume level and is seamlessly integrated into Backup Exec. There is no need to know which files are open ahead of time; just set a scheduled backup to use this option with a simple mouse click.

**Remote Agent for Windows NT and Windows 2000** — enables protection and optimizes backup performance of remote Windows NT and/or Windows 2000 servers, including the Registry and System State. The exclusive Agent Accelerator™ technology maximizes backup performance by providing source-level compression and distributed processing to reduce network traffic.

**Remote Agent for NetWare** — expands networkwide data protection by fully protecting all NDS and bindery information across NetWare 3.12, 4.x and 5.x environments. Backup a NetWare server to the Windows NT/Windows 2000 backup server, while offering 100 percent SMS compatibility supporting the current versions of NetWare. The exclusive Agent Accelerator technology maximizes backup performance by providing source-level compression and distributed processing to reduce network traffic.

**Agent for IBM ADSM** — allows access to the full line of IBM mid-range/mainframe hardware and ADSM software utilizing the ADSM system as a large data storage device. Backups can be automatically routed to the ADSM system just as if it were a large tape library or autoloader. Additional clients can be purchased to provide flexibility for multiple backup servers access to ADSM.

**RAIDirector™** — is a tape RAID option, supporting RAID levels 0, 1, 0+1 and 3, that provides increased performance and fault tolerance of existing tape hardware while dramatically shrinking the backup window—and for a fraction of the cost of hardware-based solutions. Logically linking multiple independent SCSI tape devices provides flexibility for mirroring (ideal for offsite storage), striping and striping with parity. Also, exclusive RAID stacking allows for mirrored, striped sets.



VERITAS Backup Exec Network Storage Executive™ consolidates the management of multiple distributed Backup Exec servers.

FEATURES	BENEFITS
<b>Windows NT and Windows 2000 Compatibility</b>	
<p>Microsoft-certified for Windows 2000 Server, Advanced Server and Datacenter</p> <p>Active Directory Integration</p> <p>Windows Management Instrumentation (WMI) Integration</p> <p>Full Windows NT and Windows 2000 File System Support</p> <p>Windows NT Registry and Windows 2000 System State</p> <p>Microsoft Cluster Server Support (MSCS)</p> <p>Microsoft Tape Format Read/Write</p>	<p>Windows 2000 certified applications reduce costs and deployment time and ensure compatibility and reliability.</p> <p>Backup Exec broadcasts its presence through the Active Directory allowing administrative control and tracking of each server in the Windows 2000 domain.</p> <p>Sends performance information and SNMP traps to any WMI-enabled framework or management console.</p> <p>Supports FAT 16/32, VFAT, NTFS, CDFS, and UDF including Macintosh and POSIX file systems for maximum flexibility.</p> <p>Protects all operating system information to preserve local server or remote workstation and server configurations using Agent Accelerator technology.</p> <p>Provides automatic cascading failover for multinode cluster environments and protects applications running active-active.</p> <p>Allows interchange of data with the Windows NT and Windows 2000 backup applet.</p>
<b>Flexibility and Ease of Use</b>	
<p><b>ENHANCED!</b> Web-browser-based Cross-platform Monitoring</p> <p><b>NEW!</b> Backup via a Specified Backup Network</p> <p>Complete Wizard-Based Operations</p> <p>One-Button Backup from the Backup Exec Assistant Console</p> <p>Microsoft Windows Explorer Integration</p> <p>Command Line Scripting Interface</p> <p>Pre and Post Command Support</p> <p>Integrated Reports</p>	<p>ExecView, uses a Java console to centralize the monitoring of backup job activity across multiple Backup Exec for Windows NT, Windows 2000 and/or Backup Exec for NetWare servers.</p> <p>Reduce LAN traffic by isolating backup traffic to a sub-network.</p> <p>Automates job creation/scheduling, media management disaster preparation, and recovery.</p> <p>Execute a complete local system backup by clicking on a single icon; providing quick and easy system protection without having to define a backup job.</p> <p>Initiate a backup from the backup server's Windows Explorer console by "right-clicking" on the resource.</p> <p>Flexibility to perform most functions supported within the graphical user interface.</p> <p>Initiates user-defined programs before and/or after backups and restores.</p> <p>Integrated reporting provides valuable information on the status of jobs and media.</p>
<b>Ensured Reliability</b>	
<p>Integrated Calendar View Scheduler and Holiday Scheduling</p> <p>Job Retry</p> <p>Automated Alert Notification and SNMP Support</p> <p>Virus Scan and Clean</p> <p>CRC Verify Operations and Database Consistency Checking</p>	<p>Easy viewing of job scheduling and managing 24x7 backup operations, also allows holidays to be excluded from the schedule.</p> <p>Automatically retries a failed job and reroutes jobs to alternate drives.</p> <p>Framework console notification via Microsoft Exchange, Lotus Notes or SMTP e-mail, pager, printer, net send broadcast, and network monitoring applications.</p> <p>Ensures data is virus free prior to backup; includes free virus signature file updates.</p> <p>Ensures data reliability with high-speed data verification.</p>
<b>Advanced Device and Media Management (ADAMM)</b>	
<p><b>NEW!</b> Backup to Disk</p> <p>Tape Retension Support</p> <p>Device Pooling, Cascading and Dynamic Load Balancing</p> <p>Automated Media Management</p> <p>Low Administrative Backup Mode (LABM)</p> <p>Automate Log Files and Disk/Catalog Grooming</p> <p>Autoloader/Library Slot Partitioning</p>	<p>Faster backups and restores using disk media, including hard drives, NAS appliances and RAID systems as storage media.</p> <p>Automatic retension of tape media for improved media reliability.</p> <p>Maximizes backup/restore performance and facilitates job failover.</p> <p>Easily set-up media formatting, labeling, tracking, rotation, defining of retention periods and catalog viewing.</p> <p>Automated device and media management for single drive autoloaders – ideal for low-administration and small business environments.</p> <p>Frees hard disk space from inactive files.</p> <p>Target backup jobs to specific slots within a tape autoloader or library; mix drive types within a tape library.</p>
<b>High Performance</b>	
<p>Support for Network Attached Storage (NAS)</p> <p>Exclusive Agent Accelerator Technology™</p> <p>Multiple Backup Methods</p> <p>Fast File Access (FFA)</p> <p>File Versioning</p> <p>Disk/Tape-Based Catalog</p>	<p>Detects and incorporates third-party Windows NT and Windows 2000 NAS devices into daily protection routines.</p> <p>Enables remote server protection and dramatically speeds up LAN backup with distributed processing, file compression, and the remote client system.</p> <p>Utilize full, daily, incremental, differential, working set and copy capabilities for added flexibility.</p> <p>Access your data faster with high-speed search of files via supported hardware.</p> <p>Maintains a list of all file versions stored on tape to simplify file location.</p> <p>Gives locator information on demand for fast file access and full catalog.</p>

## Worldwide Leader for Windows NT and Windows 2000 Data Protection

### Minimum System Requirements

#### Operating System:

- Microsoft Windows NT Small Business Server v4.5 and Microsoft Windows NT Small Business Server 2000
- Microsoft Windows NT Workstation v4.0 or Microsoft Windows NT Server Operating System v4.0; Service Pack 4 or higher
- Windows 2000 Professional, Windows 2000 Server, Windows 2000 Advanced Server or Windows 2000 Datacenter Server

Operating system support based upon Edition purchased

#### Processor:

- x86 Intel or compatible, DEC Alpha system\*\*\* (Alpha supported on Windows NT 4.0 only)

#### Memory:

- Required: 24 MB RAM required (16 MB for System Services, 8 MB for Client)
- Recommended: 32 MB RAM (or more for better performance)

#### Disk Space:

- 45 MB hard disk space required after Microsoft Windows NT and Windows 2000 is installed (typical installation)

### Other Hardware

- CD-ROM drive
- Printer supported by Microsoft Windows NT 4.0 and Windows 2000 (optional)
- Modem supported by Microsoft Windows NT 4.0 or Windows 2000 for pager notification (optional)

### Storage Hardware

- Backup Exec supports all major storage hardware technologies and requires at least one storage media drive and/or autoloader and the appropriate controller card. Refer to the Backup Exec hardware compatibility list at [www.support.veritas.com/dsl](http://www.support.veritas.com/dsl) for a complete Device Support List.

### Supported Tape Formats

- Microsoft Tape Format v1.0 (read and write)
- Backup Exec *for NetWare* (read)
- CA ARCserve v6.x and ARCserve 2000 for Windows NT and Windows 2000 (read)
- CA ARCserve v4.x, 5.x and 6.x for NetWare (read)
- SMS/SIDF (read)
- QIC 113 (read)

\* Option/Agent sold separately

\*\* For more information consult the Backup Exec Tech Support page at [http://support.veritas.com/menu\\_ddProduct\\_BEWNT.htm](http://support.veritas.com/menu_ddProduct_BEWNT.htm).

\*\*\* Not applicable with Intelligent Disaster Recovery™, Agent for Oracle Server, Agent for SAP R/3, IBM ADSM Option, Agent for Lotus Domino Database, QIC 113 Tape Read

### Backup Exec *for Windows NT and Windows 2000 Editions*

Backup Exec Server Edition installs on and protects a Windows NT 4.0 Workstation/Server, Windows 2000 Professional, or Windows 2000 Server. Client protection includes remote Windows 95/98, Windows NT 4.0 Workstation, and Windows 2000 Professional machines, as well as Macintosh, UNIX, and Linux.

VERITAS Backup Exec *for Windows NT and Windows 2000 Advanced Server Edition* adds the ability to install and locally protect for Windows 2000 Advanced Server and Windows 2000 Datacenter Server.

### VERITAS NetBackup Family

VERITAS Backup Exec™ is part of the NetBackup family of data protection solutions, that include **NetBackup™ DataCenter**, **NetBackup BusinessServer™**, **NetBackup™ Professional**.

The VERITAS NetBackup family delivers the industry's leading backup and recovery software solution for heterogeneous environments, scalable from the desktop to the data center—on all platforms and in all databases. Large and small businesses rely on VERITAS, The Data Availability Company™, to provide fast, reliable, easy-to-use scalable solutions to protect data across the enterprise and help maintain Business Without Interruption™.



**About VERITAS The Data Availability Company™:** VERITAS Software Corporation (Nasdaq:VRTS) provides essential data availability software solutions that enable customers to protect and access their business-critical data for Business Without Interruption™.

### VERITAS Software Corporation

**Corporate Headquarters**  
**350 Ellis Street**  
**Mountain View, CA 94043**  
**650-527-8000 or 800-327-2232**

For additional information about VERITAS Software, its products, or the location of an office near you, please call our corporate headquarters or visit our Web site at [www.veritas.com](http://www.veritas.com).